

orkanda



# Home Lifts **CATALOGUE** 2023

@orkanda.co.id @orkandaliftindonesia

[www.orkanda.co.id](http://www.orkanda.co.id)







# Content

- 01 Orka 200  
Introduction
- 03 Orka 200  
Product overview
- 13 Orka 150  
Introduction
- 17 Orka 150  
Product overview
- 25 Vimec E10  
Introduction
- 29 Vimec E10  
Product Overview
- 45 Vimec E20  
Introduction
- 47 Vimec E20  
Product Overview
- 53 Handicare 1100  
Introduction
- 55 Handicare 1100  
Product Overview
- 61 Handicare Freecurve  
Introduction
- 63 Handicare Freecurve  
Product Overview
- 64 Orka Hybird  
Product Overview

# ORKA 200

## Home Lifts







# ORKA 200

## Home lift

ORKA 200 is a screw driven vertical platform lift assembled using high quality materials and designed to meet the characteristics of ultimate performance and outstanding aesthetics.

It is designed to be used in private houses, cottages and apartment buildings.

ORKA 200 can be installed into existing building or in its own inbuild shaft which is constructed of special multilayered steel sandwich type panels or glass panels.

A maximum of three doors may be installed on each floor with either left or right swing. The doors on the top floor stop may be designed in the form of half gates as an option. This type of

construction looks aesthetic and modern and gives a clear view of the surroundings.

A uniformly backlit control panel, with a comfortable handle below, contains large buttons with embossed symbols at a convenient height for accessing from sitting or standing positions. In case of a power outage, the operation of lift continues to work from a backup power source for emergency lowering purpose.

You can make your own lift solution by choosing from wide variety of accessories and options, such as different sizes, door openers, comfort equipment and so on.

# ORKA 200 Platform lift

- Flexible design
- Low space requirements
- High level of security
- Power-saving technologies
- Smooth adjustable movement
- Fast and intuitive installation
- Exterior design options
- Durable screw drive
- Wide range of options and accessories

## Specifications

Environment	Indoors and outdoors
Drive system	Screw-driven
Rated load	Up to 400 kg / 5 persons
Speed	0.75 m/sec (9 m/min)
Travel height	Up to 20 metres
Landings	Up to 6
Platform dimensions (X x Y, mm)	1100 x 1400 1070 x 1485 <small>*available custom dimensions</small>
Shaft dimensions (M x N, mm)	1500 x 1460 1460 x 1540 1540 x 1540
Door clearance (width x height, mm)	900 x 2000 (with 1100 x 1400 platform) 940 x 2000 <small>*available other dimensions</small>
Gate (width x height, mm)	900 x 1300 (with 1100 x 1400 platform) 940 x 1300
Door configuration	Right or left swing, up to 3 doors per landing
Shaft walls	Aluminium profiles with glass or steel panels
Standard colors	RAL 9006 (light grey aluminium) RAL 9010 (pure white) <small>*any RAL color available as option</small>
Soft start/stop	Comes as a standard
Power supply	220-230 V, 1 phase, 25A, 380-400 V, 3 phase, 16A, 50 or 60 Hz
Motor	2.2 kW
Noise level	Less than 70 dB
Control system	Micro computer based
Technical safety equipment	Safety edge around the platform, emergency STOP buttons, electronic speed control, overload detector, opening control of doors and locks, electronic control of engine performance

Complies with the European platform lifts standard EN81-41:2010

Orka 200 home lift will advance your home and make daily life enjoyable!

### PANELS

Platform shaft can be assembled using multi-layered sandwich panels(Available In RAL) or with laminated glass panels(Option).

### DIFFERENT DOOR TYPES

Gates : Aluminium frame with glass; As options: Fire Proof E160; Fire proof EW60 - with a small window

### FLOORING

Lift platform floor can be covered with different coloured rubber or desired texture vinyl as option.





Orka200 Black



Orka200 Yellow





Orka200 Red



Orka200 Glass



Orka200 Glass & Panels



Orka200 Fireproof

## Orka 200 New technology & models

### Door Types

#### Double Swing Door



#### Single Swing Door



You can create your own elevator solution by choosing from a wide variety of accessories and options, such as: different lightning door openers, convenience equipment. Besides that, there is also an automatic door option that can make it easier for those with special needs, so they can become friends for mobility

You can use the single door model, but this only applies to the old Orka 200 Type model. As an additional option, an automatic door model is also available, which is very suitable for wheelchair users, or people with other special needs, so that it can be the right solution for ease and comfort of mobility in the home.

## New Model Interior

### *Elegant & Beauty*

This model is a screw driven vertical platform lift assembled using high quality materials and designed to meet the characteristics of ultimate performance and outstanding aesthetics. It is designed to be used in private houses, cottages and apartment buildings. A maximum of three doors may be installed on each floor with either left or right swing.

Drive unit works extremely silent. That is because we use belt lifting system. A uniformly backlit control panel, with a comfortable handle below, contains large buttons with embossed symbols at a convenient height for accessing from sitting or standing positions. In case of a power outage, the operation of lift continues to work from a backup voltage source.







Outer puch button with standard key switch

ITEM NO.	Kojele K/QTY.	PART NUMBER	DESCRIPTION
1	1	BL101-DU65.000.01	Dezute
2	1	BL101-DU66.000.01	Mygtukas + raktas
3	4	ISO 7380 M4x12	Screw



Standard key (Option)



Dallas System (Options)



MX2



**Braille Orka200  
call button**



**Orka200 Button  
Normal**



**Orka200 Bouton  
with key**



**New call button**



**Main Drive Motor**



**Floor Display**



**external automatic  
door opener**



**Safeline**

## Orka 200 parts(Platform Layer)

orkanda







# ORKA 150

## Open Platform Lifts





# ORKA 150

## Open platform lift

Orka 150 is Open Platform Lift, also known as Wheelchair Lift, which provides internal or external vertical travel up to 3 meters.

Our Open Platform Lift can accommodate changes in level from 600 mm up to 3000 mm in commercial and domestic environments and is appropriate alternative solution to a fully enclosed platform lift.

Orka 150 is specifically designed for applications with little or no alterations to existing buildings.

The open type design offers an aesthetically pleasing solution with brushed stainless steel finish as option. The lift provides a safe and easy way to gain access to a property where stairs would otherwise prevent wheelchair access.

It is designed to give customers choice and flexibility. Orka 150 Open Lift is a space saving and cost effective way to provide access for everyone to your home or workplace.



All our lifts are supplied with a 24-months warranty as standard, and we offer a range of maintenance and service options, which can be tailored to suit your specific requirements.

## Features

- Modern lightweight design
- Stainless steel construction as option
- Low space requirements
- High level of security
- Silent operation
- Simple to use
- No pit required
- Simple to install and easy to service
- overall low maintenance and running costs

## Specifications

User group	Ambulant and wheelchair users
Suitability	For internal or external use
Travel	Up to 4 metres
Number of stops	2
Maximum capacity	400 kg
Platform size	1100 x 1400 mm (standard)
External dimensions	1300 x 1770 mm (standard)
Gate	950 x 1100 mm (standard) with auto closers
Cabin height	1100 mm
Drive type	Belt
Power	220-240 V, 1 phase, 16A 380-400 V, 3 phase, 10A, 50 Hz
Lighting	Controls illuminated
Safety edge	Safety edge - under platform proximity sensors
Handrail	Integrated to lift cabin (on both sides)
Machine room	Integral to guide rails
Floor	Anti slip rubber (Anti slip diamond plate for outdoor version)
Finish	RAL 9006 (White aluminium)

## Options

### PLATFORM

900 x 1400 mm  
1000 x 1400 mm

### GATE

Automatic upper gate  
Automatic lower gate

### CONTROL

Configurable control side  
Dual control on the platform  
Auto dialer on the platform  
Remote control  
Braille on the control

### SAFETY

Battery emergency lowering device

### FINISH

Painted in any RAL color  
Brushed Stainless Steel



**Orka 150** Stainless Steel





**Orka 150 Red**







**“The only  
disability  
in life  
is a bad  
attitude”**

Bringing back the  
spirit for life.

# Handicare Freecurve

## Chair Lift





I love how my Handicare Freecurve was Custom built just for my home; my dealer provided so many options to personalize it just for me. Traveling up and down my staircase has never been easier with my new chairlift.

## Features

- Single Tube Rail System
- Compact and Foldable
- Multiple Rail Color &
- Seat Options
- Easy to use & Maintain
- Available Active Seat.
- Powered Footrest
- Turn & Go & Seat Swivel Option
- Obstruction Free Add-ons for
- Top & Bottom Landings



### **Safe Working Load (SWL)**

275 lb (125 kg)



### **Warranty**

Orka Freecurve: 2 years  
Motor & Gearbox: Limited Lifetime

## Regain your **independence** and conquer the **struggles** of staircase

Orkanda offers a chairlift solution that gives you freedom of movement throughout your home, allowing you to age on the spot without the hassles of everyday life. The compact and adjustable hanging chair can be installed anywhere. We have dozens of satisfied customers with our large selection of chairlifts.

## Regain your **independence** and conquer the **struggles** of staircase

Handicare Freecurve features a revolutionary design that takes up less space on stairs with special features that provide unlimited options. The spiral, narrow and steep staircase presents no challenge to the Freecurve thanks to its single tube rail, which is designed to fit into any home with a circular staircase.

Easy to maintain with a quiet and smooth ride that provides ultimate safety and comfort. The Freecurve is available in unique and elegant designs in a wide selection of chair and rail colors to match your home décor and personal taste.







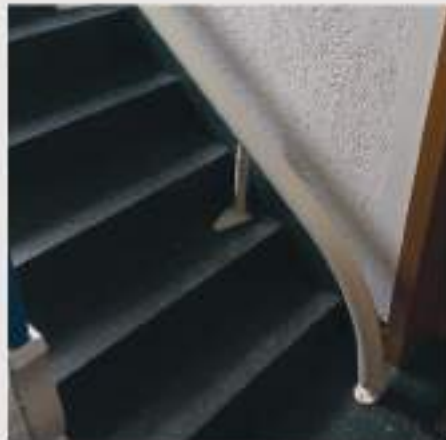
## Compact

The Orka Free Curve folds easily to maximize space for family members to climb up and down stairs as needed when not in use.



## Easy to Use

Ergonomic and intuitive to use, the joystick on the palm rest operates the Freecurve smoothly.



## Adaptable

Combine your chairlift with a powered hinge or drop nose option to prevent tracks from blocking the door at the base of the stairs.



## Multiple Charge Points

Charging points are conveniently located at the top and bottom of the ladder for painless recharging.



## Turn & Go

Narrow stairs are not a problem for freecurves, the optional Turn & Go feature automatically rotates your seat forward while driving. A convenient solution that allows more space for users in tight environments.



## Active Seat

The optional active seat option makes sitting or getting up from your Freecurve even easier. With just a pull of the lever, your movement is supported to maintain tension in your joints and muscles. (Available with Alliance and Elegance seats).



## Safety First

An optional powered footrest lets you fold and unfold the footrest without bending over, LED lighting improves visibility in low-light areas (standard with powered footrests) and a non-slip texture provides better grip on the foot when sitting up and going.



## Automatic Swivel

Optional powered swivel makes it easy to get off the lift at the top of the landing, simply hold down the toggle switch in the landing direction to rotate the seat for a controlled departure. With an 80 degree tilt, you face more top landings which provide greater safety when getting up from your Orka Freecurve. (Manual turning standard).





## Classic Seat

The Classic Chair is very comfortable and designed with the input of the therapist. Corner seats with faux leather upholstery that offer a timeless ergonomic design.

### Options

Powered Swivel  
Powered Footrest  
with LED Illumination  
Turn and Go  
Active Seat  
Body Harness  
Child Seat



## Alliance Seat

The Alliance Chair has a refined appearance making it a welcome addition to any interior. The two-tone combination of wood and faux leather upholstery makes this chair really stand out.

### Options

Powered Swivel  
Powered Footrest  
with LED Illumination  
Turn and Go  
Active Seat  
Body Harness  
Child Seat



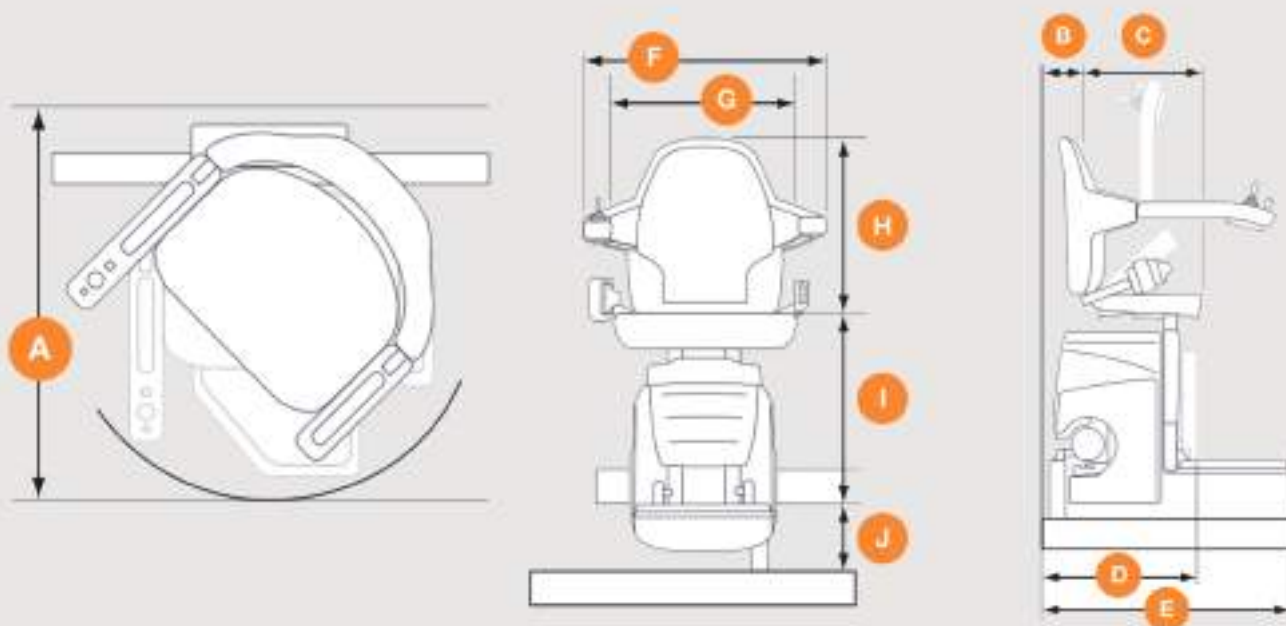
## Elegance Seat

Kursi Elegance memadukan desain mewah dengan kenyamanan tertinggi, berkat pelapis kulit imitasi super lembut. Kursi terlihat dan terasa gaya dengan nuansa elegan. Sandaran tangan juga dapat disesuaikan ke

### Options

Powered Swivel  
Powered Footrest  
with LED Illumination  
Turn and Go  
Active Seat  
Body Harness  
Child Seat





## Safe Working Load (SWL)

45-70°: 275 lb (125 kg)

## Speed

0.35 ft / sec (0.10 m / sec)

Some of the dimensions depend on the characteristics of the staircase in the home. Handicare reserves the right to alter designs and specifications without prior notice.

## Freecurve Style Seat Dimensions

<b>A</b> Swivel radius	28.4–29.5 in (721–749 mm)
<b>B</b> Wall to inner seat back	4.1–5.1 in (105–130 mm)
<b>C</b> Seat depth	14.5–15 in (368–381 mm)
<b>D</b> Folded width to footrest, minimum	16.5–17.4 in (419 mm)
<b>E</b> Open width to edge of footrest, minimum Offset footrest	25.1–26 in (638–660 mm) 24–24.8 in (607–629 mm)
<b>F</b> Armrest width, external	22.1–23.5 in (562–597 mm)
<b>G</b> Armrest width, internal	17.1–18.3 in (435–464 mm)
<b>H</b> Seat back height	15.5–16.4 in (394–416 mm)
<b>I</b> Footrest to seat height	18.6–19.5 in (473–495 mm)
<b>J</b> Footrest height, minimum	3.9–4.9 in (98–124 mm)
Track intrusion into staircase, minimum	6.8–7.5 in (171–191 mm)
Weight limit, maximum	275 lb (125 kg)

\*Dimensions vary based on seat style selected and may vary depending on hand of seat.

\*\*Seat depicted in specification drawings is our Classic Seat.

# Handicare 1100

## Chair Lift







---

**Handicare 1100 gives me complete freedom and makes me confident to move around the house safely every day.**

---

## Features

**Patented Multi-Drive Technology**  
**Ultra Thin Rail**  
**Constant Load**  
**Compact and Foldable**  
**Easy to Use and Maintain**  
**Powered Footrest Available**  
**and Swivel Option**



### **Safe Working Load (SWL)**

30-45 : 309 lb (140 kg)  
46-50 : 287 lb (130 kg)



### **Warranty**

Handicare 1100: 2 years  
Motor & Gearbox: 10 Years



## Regain your **independence** and conquer the **struggles** or staircases.

orkanda

The Handicare 1100 offers a chairlift solution that provides freedom of movement throughout your home, allowing you to age on the spot without the hassles of everyday life. Our compact and adjustable fit can be installed anywhere. We have dozens of satisfied customers with our large selection of chairlifts.

### **Ultra slim profile. Revolutionary drive system.**

Handicare 1100 features next-generation technology in an ultra-slim design that doesn't take up much space on your stairs. The patented Multi-Drive Friction System will ensure your chairlift is operating at peak levels at all times without a drop in performance.

We ditched the traditional rack and pinion model and invested in a friction drive system to power our gen net chairlift. We've achieved a quieter, smoother, sturdier chairlift that's much easier to maintain. The contemporary design allows the Orka 1100 to blend into any environment, becoming a complementary part of your home.



## Compact

Handicare 1100 folds easily maximizing space for family members to go up and down stairs as needed

## Easy to Use

Ergonomic and intuitive to use, the joystick on the palm rest operates the Orka 1100 smoothly.

## Easy to Maintain

The Handicare 1100 has four brush heads that constantly clean the rails of dust and hair, ensuring your lift is always spotless. The gear rack-free design also eliminates the need for grease on the rails offering a clean finish today and tomorrow.

## Always Charged

The Handicare 1100 comes standard with continuous charging, your lift is always charged anywhere on the track.





## Retractable Seatbelt

Handicare 1100 folds easily maximizing space for family members to go up and down stairs as needed



## Patented Multi-Drive Friction Technology

Handicare 1100 folds easily maximizing space for family members to go up and down stairs as needed



## Safety First

The optional powered footrest allows you to fold and unfold the footrest without having to bend over, the non-slip texture of the footrest provides better grip on the foot when sitting and going.



## Swivel Automatically

Optional powered swivel makes it easy to get off the lift at the top of the landing, simply hold down the toggle switch in the landing direction to rotate the seat for a controlled departure.





**Vanilla Beige**

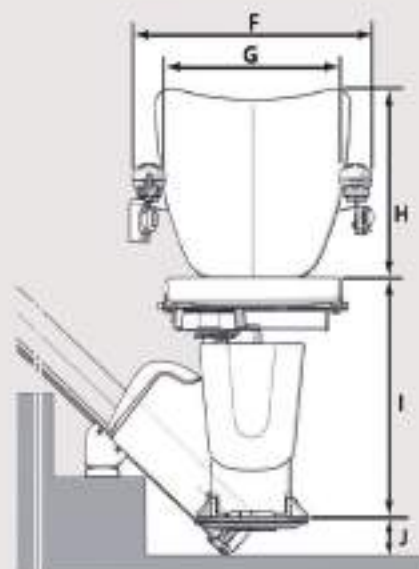
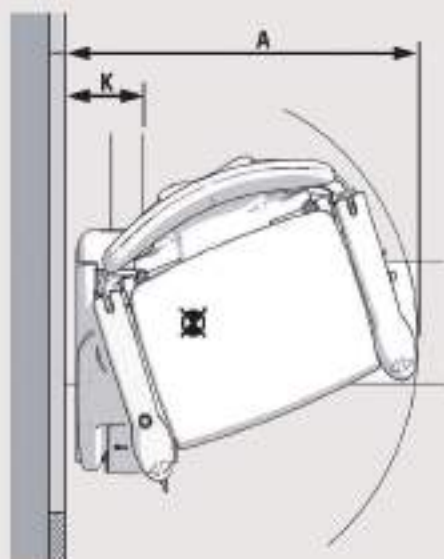
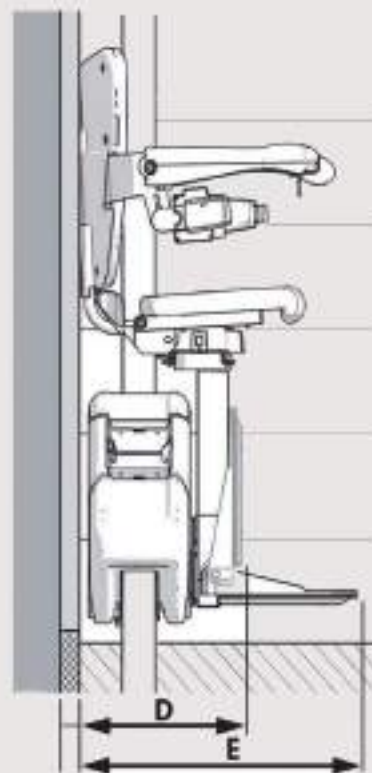
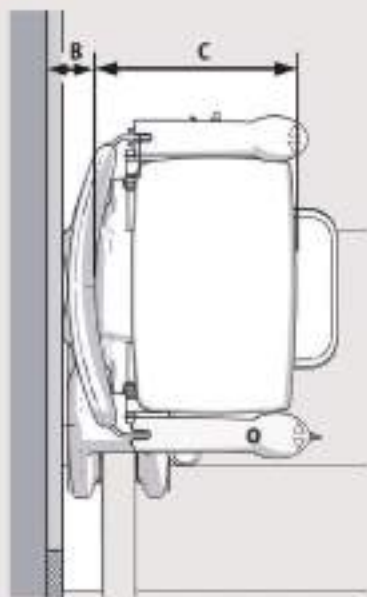
## **A Stairlift Suited for Any Interior**

We designed the Handicare 1100 to be a smart and stylish complement to everything else in your home. The contemporary design is welcome in any home décor and is available in a warm vanilla beige finish.

Featuring our comfortable stylish chairs in faux leather upholstery, the seat surface is easy to clean and easy to clean.

Ultra-thin rails beautify the Handicare 1100, only no other rail on the market competes with its overall look and slim profile, unobtrusive design.

# — Specification



orkanda

orkanda

## Orka 1100 Style Seat Dimensions

### Safe Working Load

30-45 : 309 lb (140 Kg)

46-50 : 287 lb (130 Kg)

### Staircase Angel

30 - 50

### Speed

0.5 ft/sec (0.15 m/sec)

<b>A</b>	Swivel radius	25.4 in (645 mm)
<b>B</b>	Wall to inner seat back	2.4 in (60 mm)
<b>C</b>	Seat depth	15.4 in (390 mm)
<b>D</b>	Folded width to edge footplate, minimum	12.6 in (320 mm)
<b>E</b>	Open width to edge footplate, minimum	20.9 in (530 mm)
<b>F</b>	Armrest width, external	22.6 in (575 mm)
<b>G</b>	Armrest width, internal	17.7 in (450 mm)
<b>H</b>	Seat back height	15.7 in (400 mm)
<b>I</b>	Footplate to seat height	16.9-20.5 in (430-520 mm)
<b>J</b>	Footplate to height, minimum	2.75 in (70 mm)
<b>K</b>	Track instruction into staircase, minimum	6.3 in (160 mm)

# Vimec E10

## Home Lifts







## VERSATILITY

ecovimec platform lifting platform and easy movement add value to the installation through easy installation inside and outside



# Value, convenience and safety

Quiet and steady It is convenient even to move groceries, strollers and other heavy or bulky items from floor to floor in the house.



**Led Bar  
Standard**



**Starry Sky**



**Integrated Handle**

# Electricity, Environment, Exclusive

---

The ecovimec elevator fits the home environment with wisdom and elegance.







## Electricity, Environment, Exclusive

---

The movement of the elevator is not only tailored to the application, but also a personal blend. It also has color and outer edges.

# Available finishes

## VIMEC E-10

### DOORS



Infrared sensors around the edge of the barrier for entering/exiting the passenger compartment to guarantee maximum safety



Two-level retractable automatic door (automatic adjustment)



Three speed automatic telescopic and landing gates



Double glass hinges for luxury and style.



Panorama in aluminum; lightness in hand



concave veneer



Concave veneer with viewfinder



stainless



RAL color on request

# Available finishes

## VIMEC E-10

### CONTROL PANEL



#### On The Panel

- A. Impressions
- B. Speaker (optional)
- C. Load indicator
- D. I-BUTTON for electronic access control system
- E. Warning button

#### Floor

- F. LCD display with trip indicator
- G. Call Button: Green when the elevator is empty.
- H. I-BUTTON FOR ELECTRONIC ACCESS CONTROL

### COLORS



cabin wall



GREY  
STANDARD



TRANSPARENT  
GLASS



BEIGE  
STANDARD



SMOKY GREY  
GLASS



BLU  
STANDARD



MAPLE  
TANDARD



WHITE  
OPACO



CHERRY  
STANDARD



SPECIAL RAL  
ON DEMAND



POLISHED  
LINEN



cabin platform



GREY  
WITH  
STAMPS



LIGHT  
GREY



DARK  
GREY



RED



WILD  
PEAR



support  
structure



VIMEC 7040  
STANDARD



RAL 1013  
LIGHT IVORY



RAL 9023  
PEARL DARK  
GREY



RAL 7016  
GREY  
ANTHRACITE



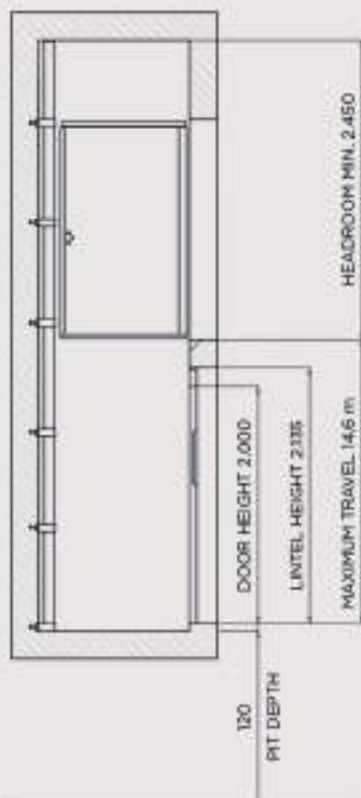
SPECIAL RAL  
ON DEMAND



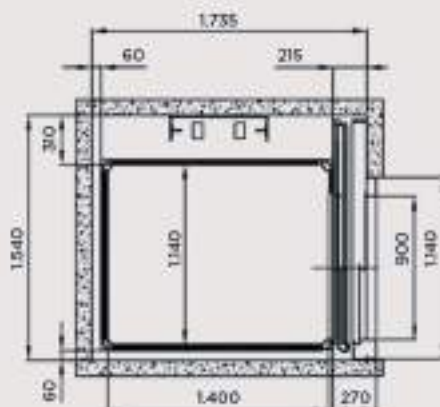
# Specifications

## VIMEC E-10

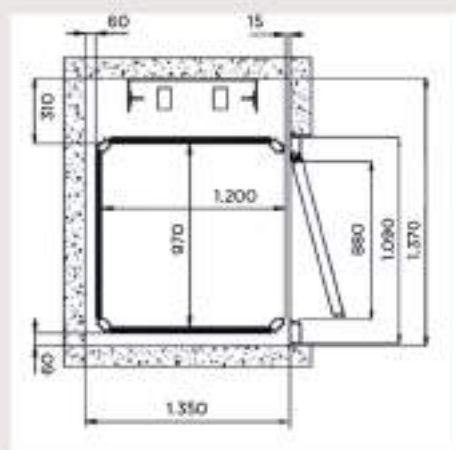
### DIMENSIONS AND OVERALL SPACES



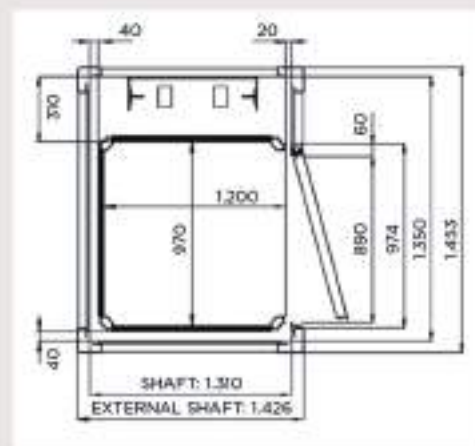
### WITH TELESCOPIC DOORS



### MASONRY SHAFT



### SUPPORTING STRUCTURE

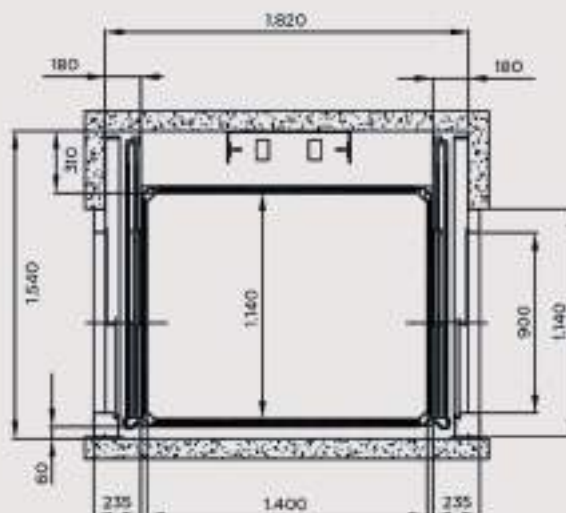


The ECOVIMEC HL (Heavy Load) model has a higher load capacity: 500 kg.

For the HL version is the same as that of ECOVIMEC; The solution is equipped with a more powerful engine (2.2 kW). and a stronger and more durable structure The platform size for this model is 1,460x1,170 mm. and 1,300x1,030 mm.

Alternatively, the HL VERSION is available weighted (150 kg only).

This makes it ideal for the most intense applications.





# Specifications

## VIMEC E-10

standard configuration

Cabin with gray walls "COLOR SERIES" (optional: beige, blue, maple, cherry).  
 "RUBBER SERIES" platform with gray stamp Buttons on the plane and on the ground 50 mm.  
 with braille without display "Energy Saving" with LED Strip Ceiling  
 Hollow Veneer Door with Window  
 Complies with the machinery directive EC 42-2006.

choice

I-BUTTON (electronic key) to manage independent access.  
 Announcing the sound to the incoming floor.  
 The sound goes to the floor that enters.  
 Auto dial 5 numbers in memory  
 display in the cabin  
 display on the floor panel  
 The handle is fixed to the cabin wall for use in public places and for people with disabilities.  
 Sliding doors on all cabins and floors  
 electric door operator for swing door  
 fire door  
 vertical or horizontal mirror

### TECHNICAL DATA

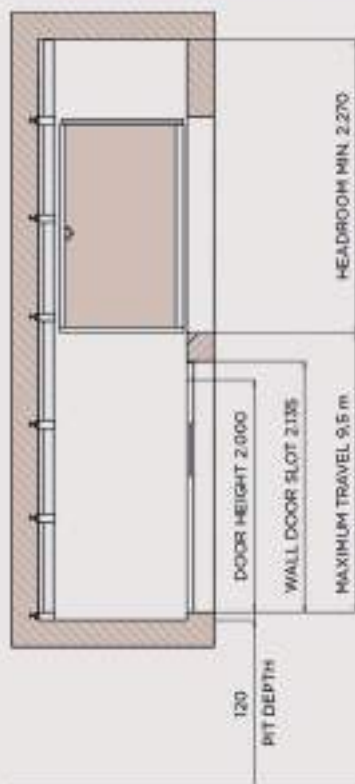
ECOVIMEC - GENERAL FEATURES			ECOVIMEC - INSIDE THE CABIN	
A	DRIVE SYSTEM AND AT-THE-GROUND CONTROL		A	INFRARED BARRIERS ON EACH SIDE OF ENTRY AND IN THE ABSENCE OF WALLS
B	BELT DRIVE		B	DEVICE OF COMMUNICATION WITH OUTSIDE THE CABIN
C	DRIVE MOTOR	1,5 KW THREE-PHASE 220 V 50 Hz	C	OVER LOAD INDICATOR
D	ELECTRIC TRACTION		D	50 X 50 mm BUTTONS WITH MECHANICAL SHUTTER AND INDICATION OF THE FLOOR IN ADDITION TO STANDARD BRAILLE
E	SOFT START/STOP SYSTEM		E	ON BOARD CONTROLS HEIGHT COMPLIANT TO EN81-41
F	VOLTAGE SUPPLY	24 V dc	F	ILLUMINATED BUTTONS (WITH COLOR IDENTIFICATION OF THE FUNCTION)
G	MECHANICAL KEY ENABLING ON-BOARD KEYPAD		G	EMERGENCY BUTTON
H	NO. 6 ACCESSES MAXIMUM		H	"ENERGY SAVING" LED BAR LIGHTS
I	NO. 2 ACCESSES TO THE FLOOR MAXIMUM		I	ON BOARD PUSH-BUTTON PANEL WITH DEAD-MAN'S CONTROLS-ALWAYS EQUIPPED WITH INFRARED PHOTOCELLS BARRIERS
J	TRICAL SAFETY LOCKS		J	"SINGLE TOUCH" OPERATION (UNIVERSAL MANOEUVRE) WITH WALLS AND DOOR IN THE CABIN
K	ON FLOOR CONTROLS WITH "SIMPLE TOUCH"			
L	PIT	120 mm FOR MASONRY SHAFT 140 mm FOR STRUCTURE		
M	TECHNICAL DIMENSIONS (ENGINE, BELTS)	310 mm		
N	TESTATA MINIMA STANDARD	2.450 mm		
O	HEADROOM MINIMUM STANDARD	2.500 mm		
P	PLATFORM SIZES AVAILABLE			
Q	2 STANDARD	1.400x1.100 - 1.250x1.000		
R	SPECIAL SIZES AVAILABLE UPON REQUEST			
			CAPACITY	UP TO 400 kg
			MAXIMUM TRAVEL	5 STOPS (14,6M)
			SPEED	0,15 m/s

DATA ARE GUIDELINE AND NOT BINDING. VIMEC RESERVES THE RIGHT TO MAKE ANY CHANGES IT CONSIDERS APPROPRIATE.

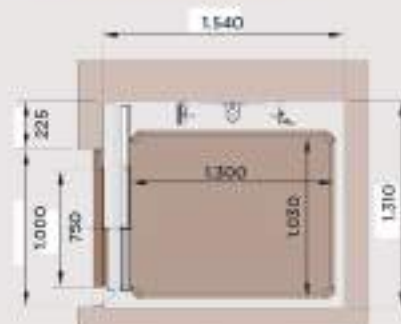
# Specifications

## VIMEC E 10

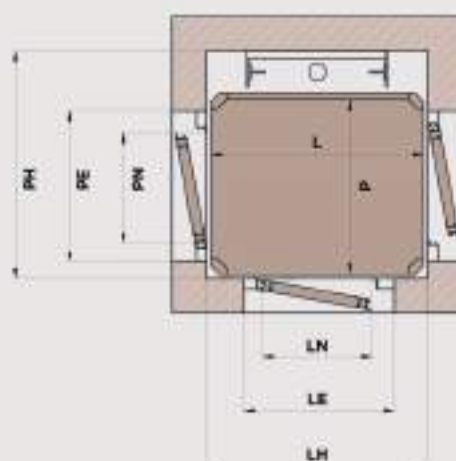
### DIMENSIONS AND OVERALL SPACES



### WITH TELESCOPIC DOORS



### MASONRY SHAFT\*



### \*MASONRY SHAFT

CABIN	L	900	1.250	1.400	770	850	1.250
	P	850	1.000	1.100	950	1.250	1.250
WALL SHAFT	LH	930	1.290	1.430	800	800	1.290
	PH	1.090	1.240	1.340	1.190	1.490	1.490

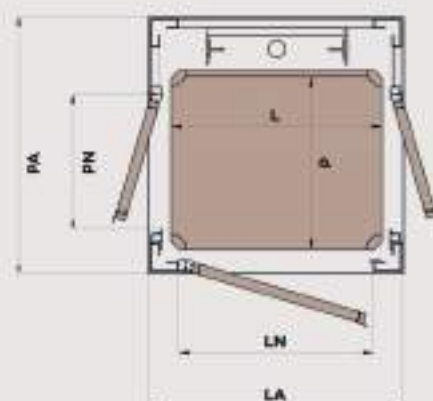
### \*STRUCTURE

CABIN	L	900	1.250	1.400	850	1.250
	P	850	1.000	1.100	1.250	1.250
WALL SHAFT	LA	1.045	1.395	1.545	995	1.395
	PA	1.195	1.345	1.445	1.595	1.595

**L:** CABIN WIDTH  
**P:** CABIN DEPTH  
**LH:** MASONRY ROOM WIDTH  
**PH:** MASONRY ROOM DEPTH  
**LA:** STRUCTURE WIDTH  
**PA:** STRUCTURE DEPTH  
**LN-PN:** DOORWAY WIDTH  
**LE-PE:** DOOR ENCUMBRANCE

**NB:** ADD 45 mm FOR EACH ADDITIONAL CABIN WALL TO THE COMPARTMENT DIMENSIONS, AND 100 mm FOR THE FOLDING DOOR ON THE SIDE OF THE CABIN.

### STRUCTURE\*



# Specifications

## VIMEC E 10

### GENERAL FEATURES

#### VERSATILE HYDRAULIC LIFT

CUSTOMIZABLE TO THE NEEDS OF THE USER AND THE BUILDING

IDEAL BOTH FOR RENOVATION PROJECTS (EASY TO INSTALL IN EXISTING SHAFTS) AND IN NEW INSTALLATIONS, SINCE SPECIAL BUILDING WORKS SUCH AS AN EXTRA ROOM TO HOUSE MACHINERY OR A PIT UNDERNEATH THE LIFT, ARE NOT REQUIRED

THE PIT REQUIRED IS TRULY NEGLIGIBLE, SINCE A RECESS JUST 12 CM DEEP IS ALL THAT IS NEEDED

THE LIFT RUNS ON THE STANDARD VOLTAGE OF 220/240 V AND ITS POWER CONSUMPTION IS 1.8 kW

**IN CONFORMITY WITH THE MACHINERY DIRECTIVE EC 42-2006**

THE INSTALLATION IS AUTOMATIC WHEN THERE ARE TELESCOPIC DOORS INSIDE THE CABIN

### HEAVY DUTY: FOR HIGHER LOAD CAPACITY

#### E07 HD

WHEN THE INSTALLATION REQUIRES A LIFT ABLE TO TAKE LOADS OF CONSIDERABLE SIZE AND WEIGHT, THE E07 HEAVY DUTY ALLOWS THE TRANSPORTATION OF TROLLEYS, BEDS AND OTHER OBJECTS WHICH REQUIRE EXTRA SPACE, WITHOUT DIFFICULTY AND WHILE MAINTAINING A STYLISH APPEARANCE.



#### PLATFORM DIMENSIONS

10 STANDARD CONFIGURATIONS:

1.400x1.300 - 1.600x900  
1.800x900 - 2.000x900  
2.200x900

1.400x1.400 - 1.600x1.000  
1.800x1.000 - 2.000x1.000  
2.200x1.100

RATED LOAD	FROM 500 TO 600 kg
MAXIMUM TRAVEL	8,5 m

### TECHNICAL DATA

EASY MOVE		
A	WORKING LOAD	UP TO 400 kg
B	TRAVEL	9,5 m
C	SPEED	0,15 m/s
D	PIT	120 mm FOR MASONRY SHAFT 140 mm FOR STRUCTURE
E	CABIN "ENCLOSED" WITH WALLS OR INFRARED BARRIERS	
F	"SIMPLE TOUCH" CALLING TO FLOOR	
G	ARRIVAL AND DEPARTURE WITH SOFT START/STOP SYSTEM	
H	DEVICE FOR COMMUNICATION WITH OUTSIDE OF CABIN	
I	AUTOMATIC SAFETY LEVELLING WITHIN	+/- 20 mm
J	CERTIFIED SAFETY VALVE	
L	ELECTRIC LOCKS WITH CERTIFICATION	UNI EN 81-2

EASY MOVE - ELECTRICAL SYSTEM	
POWER	1.8 kW
MAINS VOLTAGE	230 V-MONO
MOTOR POWER SUPPLY VOLTAGE	230 V
AUXILIARY POWER SUPPLY VOLTAGE	24 V

#### PLATFORM DIMENSIONS

4 STANDARD CONFIGURATIONS:  
770x950 - 1.250x1.000 - 1.250x1.250  
1.400x1.300 - 1.480x1.370  
SPECIAL PLATFORM SIZES:  
**AVAILABLE**

DATA ARE GUIDELINE AND NOT BINDING. VIMEC RESERVES THE RIGHT TO MAKE ANY CHANGES IT CONSIDERS APPROPRIATE.



# Vimec E20

## Home Lifts





## Style and Design

Our story begins, and continues, in the motor valley, in the heart of the emilia-romagna region. This heart also beats to ensure excellent quality and service. Our products are completely made in Italy, with more than 75% of our suppliers located within a few kilometers of the luzzara production site.





## Experience

From 1980 to today we are involved with thousands of customers and professionals, and together We design and manufacture a wide range of customized installations. Worldwide

## Enviromental Suistainability

Transparency and passion guide us in every effort we make to reduce our carbon footprint. We take care of the future, our future and our customers, and we are all part of the project to ensure our planet remains the most beautiful place to live in.

## Innovation and Technology

We are committed to providing the best customer experience, and to do this we redesigned all Controls and material flow together with our technology partners.

## Numbers

Luzzara factory is more spacious than 20,000 m<sup>2</sup>. We have 5 European commercial branches. Vimec employs 170 people, with more than 100 technical partners in Italy and more than 400 worldwide



## Home Lift Senses and Sensations

### Enviromental Suistainability



Only certified and recyclable materials, with reduced environmental impact, including wood. Housekeeping puts the vimec philosophy into practice for the planet: reducing our carbon footprint is part of an investment made in corporate social responsibility.

### Lighting



Through a simple app, or complementing an already installed home automation system, your home lift bluetooth protocol allows you to adjust lighting intensity, light warmth and color tone, available in 72 million colors. A powerful tool to customize your cabin right at your fingertips.







#### Touch

Touch materials, walls and floors, touch button panels: tactile sense and tactile sensations want their share too. The prestige of your home lift is also rooted in exclusive details and finishes, designed for your home and therefore different from the materials commonly used in lifts for many different audiences.



#### Breathe

Safety features for correct airflow are in the cab system:  
The air inlet above the ceiling is not visible, to respect the elegance of the form; You can stay in the cabin as long as you want, worry-free.



#### IoT

This means the internet of things. Your home lift is already boarded up to accommodate implementations available in the near future: knowing the status of your prized home lift, and exchanging data regarding usage and safety, along with suggestions for its best use and to maintain the highest efficiency over time.



## Precious Details and Sensations

---

With "made in Italy" elegance and innovation, the vimec homelift is like an extra space that can give prestige and completeness to your home.

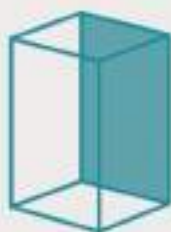




## HOME LIFT'S INSPIRATIONS:

Minimal Environment, which enhances wall personalization with panel buttons. Always made from rich. Stainless steel frame and accessories enhance choice of materials, and white walls let the lighting effects stand out.

### WALL WITH CABIN BUTTON PANEL



#### CONTEMPORARY\*



ROBUR WOOD

#### NEW CLASSIC\*



FABRIC

#### NORDIC



WHITE SQUARED

### CABIN PLATFORM



SMOOTH ANTHRACITE



GREY WOOD



BLONDE WOOD

### ALTERNATIVES FOR WALLS WITH BUTTON PANEL\*

#### CONTEMPORARY



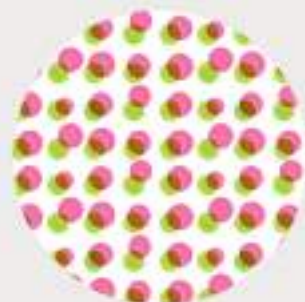
FENICE

#### NEW CLASSIC



FACTORY GREY

#### URBAN



LITTLE ROUNDS



With the E20 home lift, you can match platform and cab walls.  
Be easy to be inspired and choose the mood that best represents the interior of your home.

#### NATURAL



CLOUD

#### COUNTRY CHIC



WHITE WOOD

#### URBAN\*



LITTLE HOMES

N.B. THE MOODS/INSPIRATIONS ARE AVAILABLE FOR THE WALL WITH THE BUTTON PANEL



SMOOTH PALM



ARDESIA



NOCE WOOD

#### ALTERNATIVE PLATFORMS\*



BLACK CHARCOAL



GREY FLOTEX SMOOTH

#### CABIN STANDARD VERSION

ALL WALLS IN WHITE FINISHING

WALL WITH BUTTON PANEL IN WHITE WOOD  
(THE MOODS/INSPIRATIONS UPGRADE IS AVAILABLE)

BLACK MECHANICAL BUTTON PANEL WITH DISPLAY  
AND BRUSHED STAINLESS-STEEL FRAME

BLACK CHARCOAL FLOOR

72 MILLION CUSTOMIZABLE LIGHTS

THE WALL ACROSS FROM THE BUTTON PANEL CAN HOLD THE FIVE LED STRIPS, THE MIRROR, GLASS AND HANDLE

A WALL ON THE SIDE OF THE BUTTON PANEL HOLDS THE FIVE LED STRIPS OR IT CAN HOLD THE MIRROR, GLASS AND HANDLE

## FINISHES: BUTTON PANEL

### EXTERNAL BUTTON PANEL AT FLOOR



TOUCH SCREEN  
WHIT DISPLAY



TOUCH SCREEN  
WHIT DISPLAY



TOUCH  
SCREEN



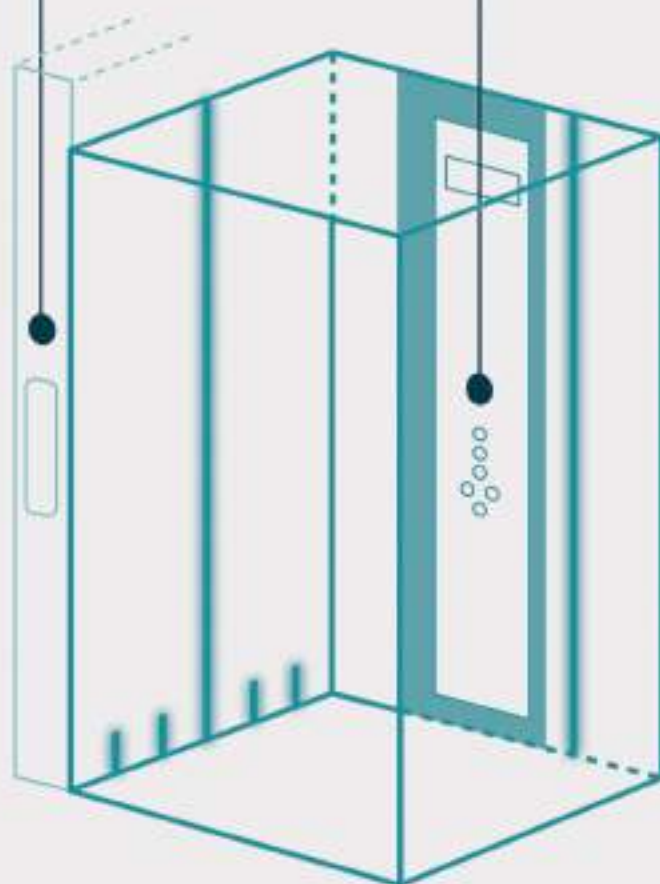
TOUCH  
SCREEN



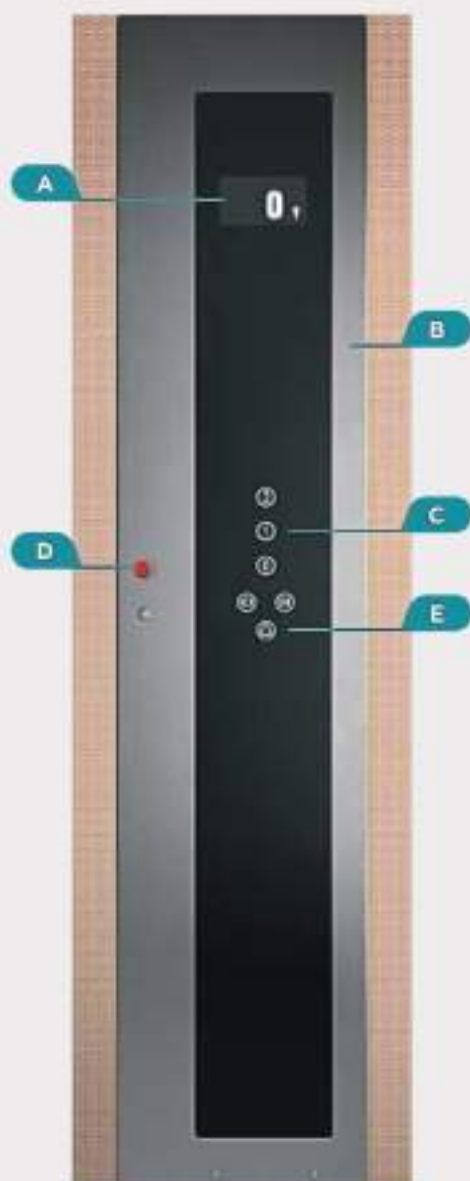
MADE OF STAINLESS  
STEEL WITH BUTTON



MADE OF STAINLESS  
STEEL WITH STANDARD  
BUTTON



## ON-BOARD BUTTON PANEL



**BLACK GLASS  
TOUCH SCREEN**



**WHITE GLASS  
TOUCH SCREEN**



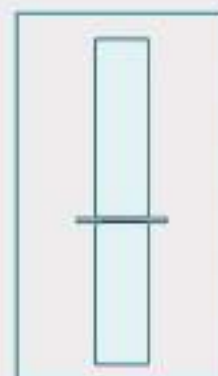
**BLACK  
WITH BUTTONS**



**WHITE  
WITH BUTTONS**

### TECHNICAL DATA ABOUT TOUCH BUTTON PANEL

- A. DISPLAY TFT
- B. BRUSHED STAINLESS STEEL FRAME, TO GO WITH THE FLOWING LINES OF THE CABIN DESIGN
- C. TOUCH BUTTONS ON HI-TECH MIRRORED BLACK GLASS H
- D. RED STOP BUTTON
- E. TELEPHONE DIAL PAD





FINISHES:  
HANDLE AND METAL  
STRUCTURES

MANIGLIONI



METAL STRUCTURES FOR EXTERIORS

THE HOME LIFT SOLUTION IS AVAILABLE BOTH FOR MASONRY SHAFTS OR WITH METAL STRUCTURES SUPPLIED DIRECTLY BY VIMEC. VIMEC HOME LIFTS CAN BE INSTALLED BOTH INSIDE A HOME AND OUTDOORS.

PLATFORM SIZES (IN mm, FLOOR SURFACE)

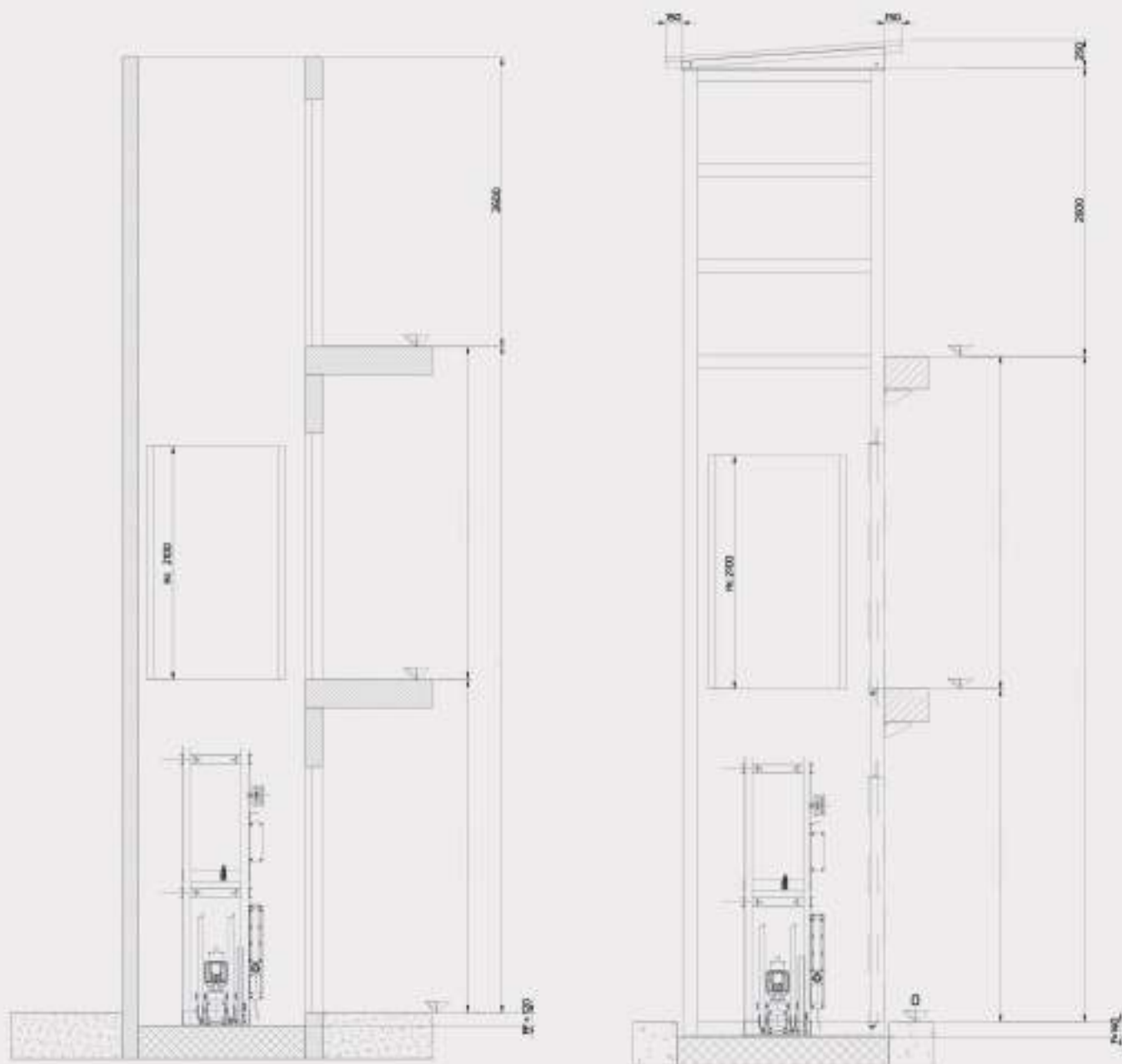
STANDARD

900X800	900X900	1000X900	1000X1000	900X1400
1100X1400	1250X800	1250X1000	1400X900	1400X1140

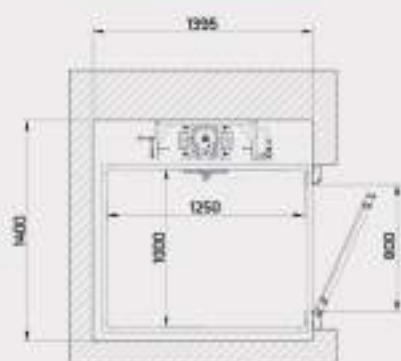
THE SIZES AND THE FINISHES OF WALLS AND CABIN PLATFORMS CAN BE FULLY CUSTOMIZED.



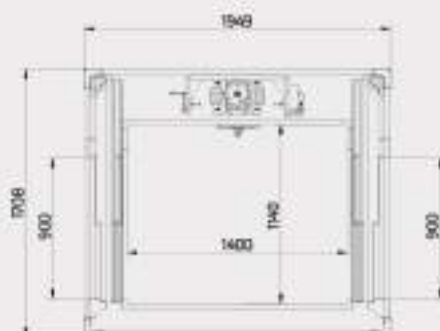
## DIMENSIONS AND OVERALL SPACES



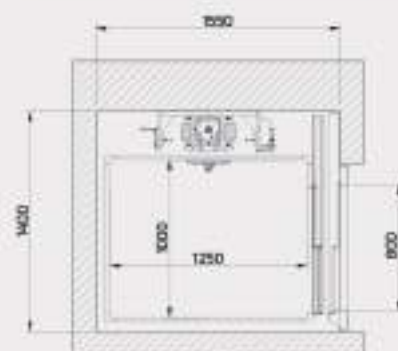
**MASONRY SHAFT**



**STRUCTURE**



**WITH TELESCOPIC DOORS**



# Orka Hybrid

## Home Lifts





## POWERSAVING HOME LIFT



RENEWABLE ENERGY  
SOURCES



LIFT REGENERATIVE  
DRIVE SYSTEM



MAIN POWER SUPPLY  
230 V1 ph+N



## SILENCE, COMFORT, AND SAFETY

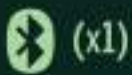


Min. Speed



Max. Speed





## TECHNOLOGY FOR **SAVING MORE ENERGY**

SAVE ENERGY  
POWER CONSUMPTION  
**Only 150 Watt**

ORKA HYBRID WORKS EVEN  
**IN CASE OF A LONG BLACK-OUT**



- SAFETY GEAR
- OVERSPEED GOVERNOR
- DOUBLE MOTOR BRAKE





## DETAILS



## SPECIFICATION

Max capacity	400 Kg
Max speed	0,15 mis - 0,30 mis (EXTRA UE)
Max travel	24.000 mm
Min headroom	2.600 mm
Min pit	170 mm
Power supply	230V monofase I IPH + N
Power consumption	0,2 kW
Power input	1,5A
plugs standard socket	230V 1-Phase.



# Cabin Catalogue



Linen



Cotton



Beige



White



Acero



Carpino



Olmo



Perera



Shabby



Travertino



Granito



Trama

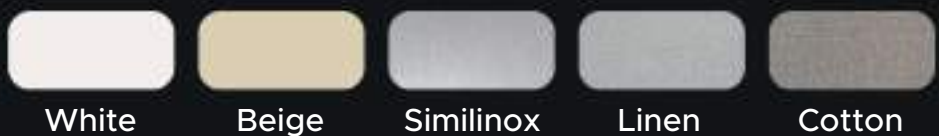


Satin

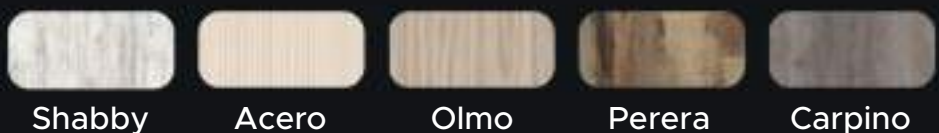




## Skin



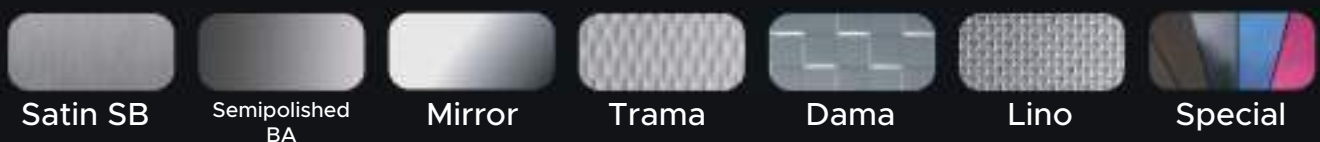
## Wood



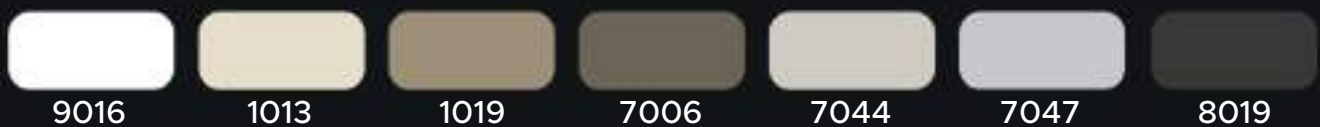
## Stone



## Inox (AISI 304 - Aisi 316)



## Ral Selection



## Door & Metal Shafet Structure



## Floor



# orkanda

[www.orkanda.co.id](http://www.orkanda.co.id)

## Jakarta

Ruko Graha Boulevard,  
Jl. Raya Boulevard, RW.1, Klp. Gading Tim,  
Kec. Klp. Gading, DKI Jakarta 14240

## Surabaya

Jl. Bangka No.8-A, Gubeng,  
Kec. Gubeng, Kota SBY, Jawa Timur 60271

## Medan

Jl. Puri No.102 A Kota Matsum IV,  
Medan, Sumatera Utara 20211



Orkanda lifts Indonesia



@orkandaliftindonesia



@orkanda.id



Orkanda Lift Indonesia



[www.orkanda.co.id](http://www.orkanda.co.id)



(021) 22454705